

FOR IMMEDIATE RELEASE

JULY 5 2020

Press Contact:

[Richellegribble@gmail.com](mailto:Richellegribble@gmail.com)

## Artificial Ecologies

### *SUPERCOLLIDER GALLERY*

How do our interventions on the landscape create new, altered, or artificial ecologies? How are we co-creating relationships with nature? The artists in this thread consider the ubiquity of artificial materials, positionalities, and relationships between humans, non-humans, more-than humans and the resulting systems. Works interrogate artificial materials in existing ecologies, position humans as remediation, and speculate future hybrid techno-ecologies following the impact of climate on local biodiversities. Regardless of stance, we are equally anchored to an ecological and technological future.

Artificial Ecologies is a virtual exhibition: it is both an architectural space and thematic grouping of the artworks of Isabel Beavers, Maru Garcia, Julian Stein and Richelle Gribble. The space embodies systems of ecology that shift in scale and relate through macro/micro relationships.

Virtual Exhibition (Link Below):

July 5 – August 31, 2020

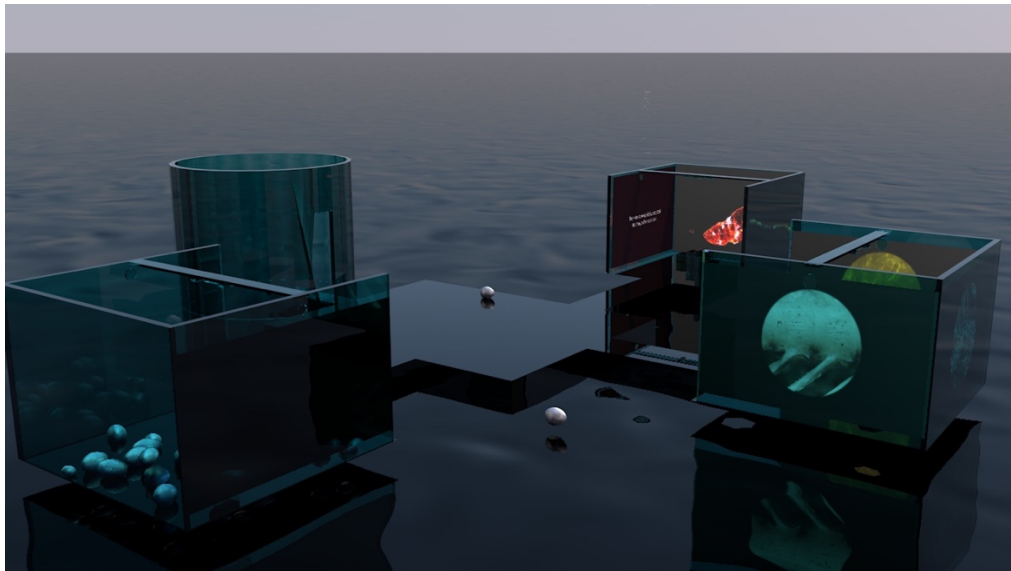
<https://culturehubla.bitbucket.io/artificial-ecologies/>

Virtual Opening Reception (Link Below):

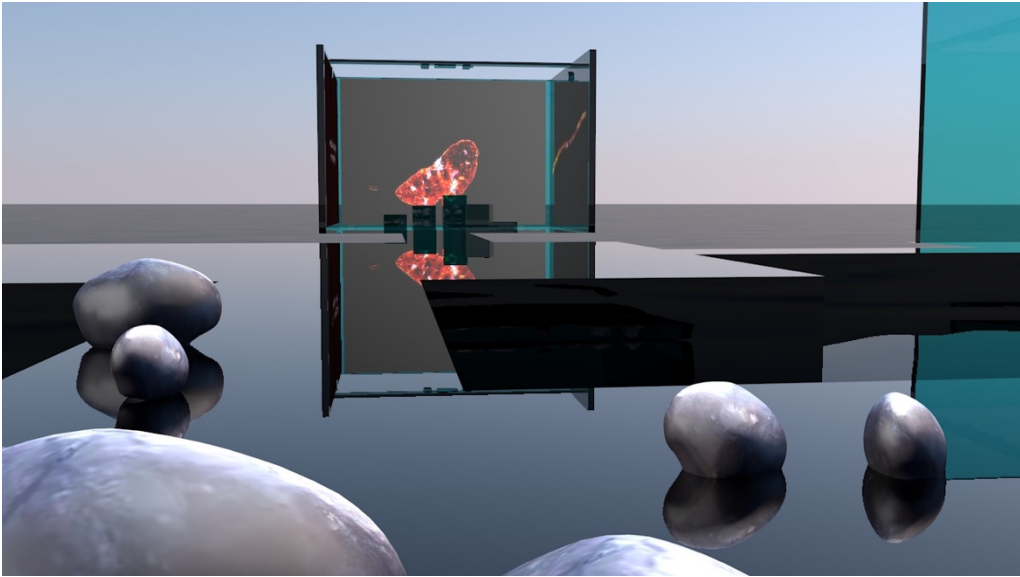
July 5, 2020 | 7 - 8pm

<https://hubs.mozilla.com/2H9zuTC/supercollider-gallery-artificial-ecologies-opening>

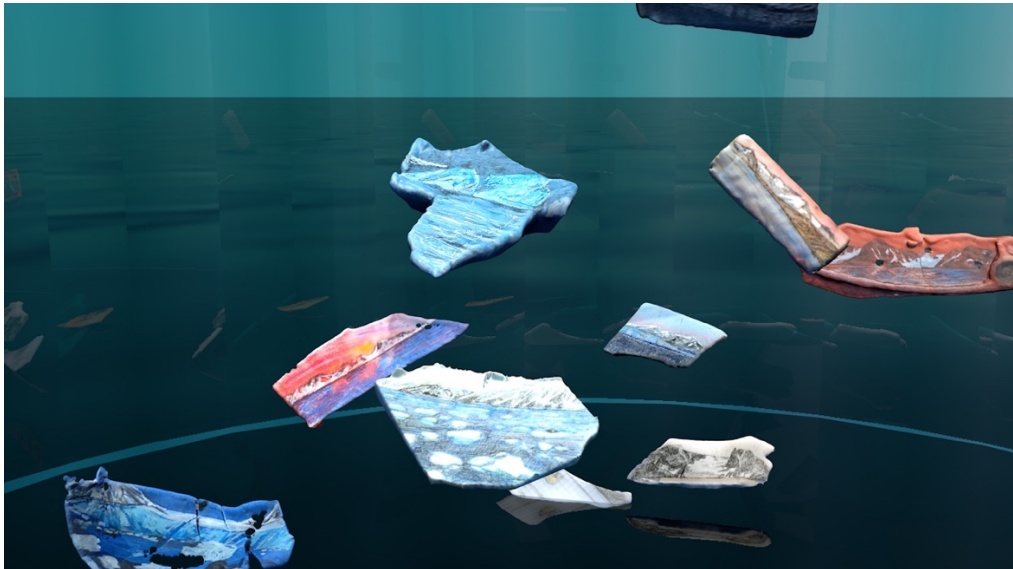
*SUPERCOLLIDER*  
808 N. La Brea Ave.  
Inglewood, CA  
90302



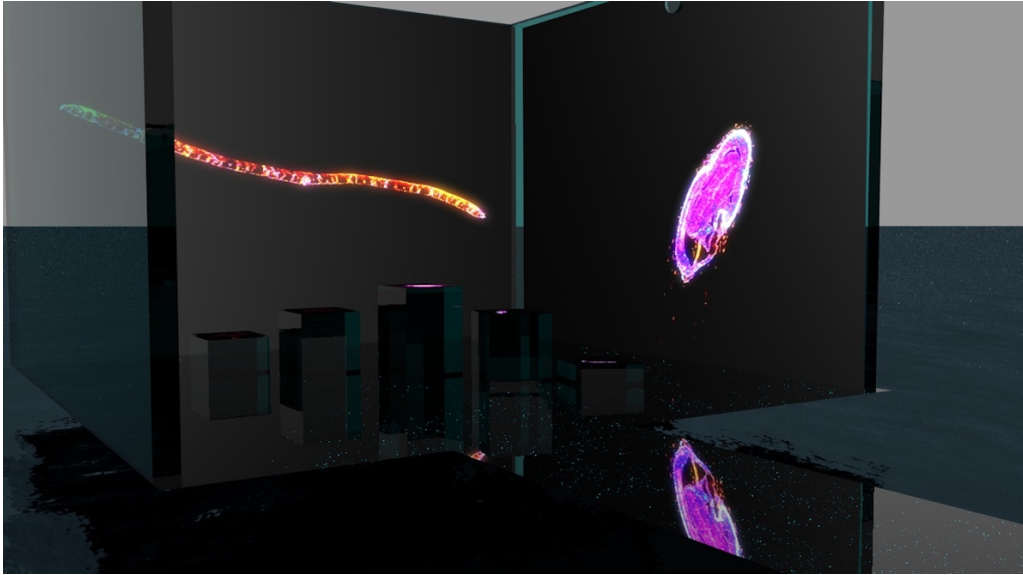
Artificial Ecologies, Virtual Exhibition (2020)



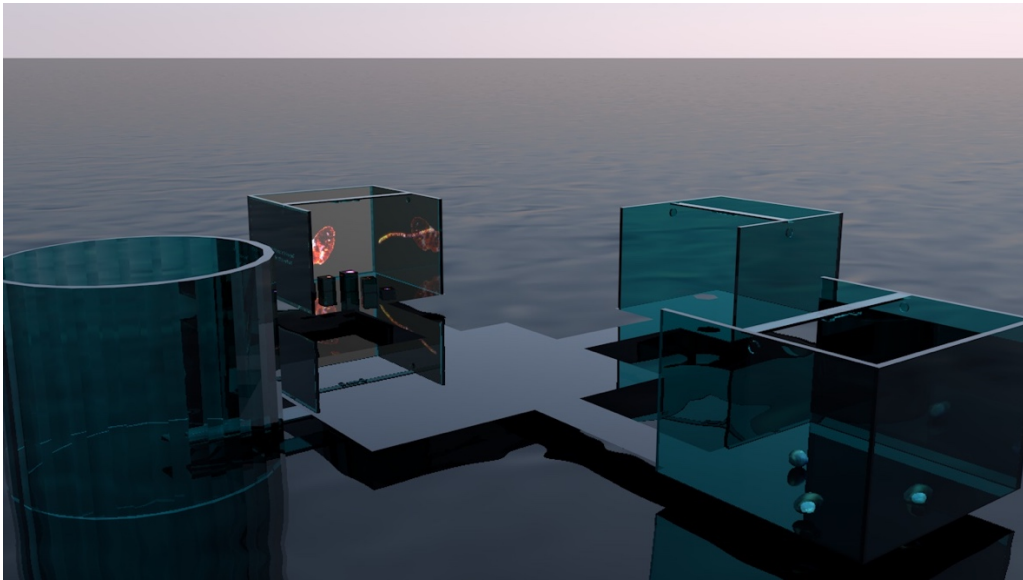
Maru García, *Vacuoles: bioremediating cultures* (2019)



Richelle Gribble, *Left Behind* (2020)



Isabel Beavers, Sensorial Bodies: Seed Bank (2020)



Artificial Ecologies, Virtual Exhibition (2020)